

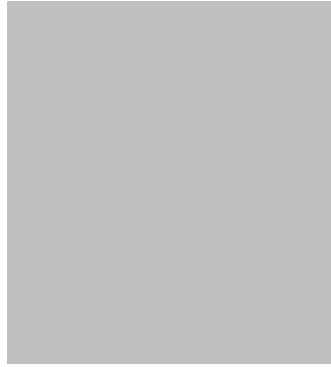
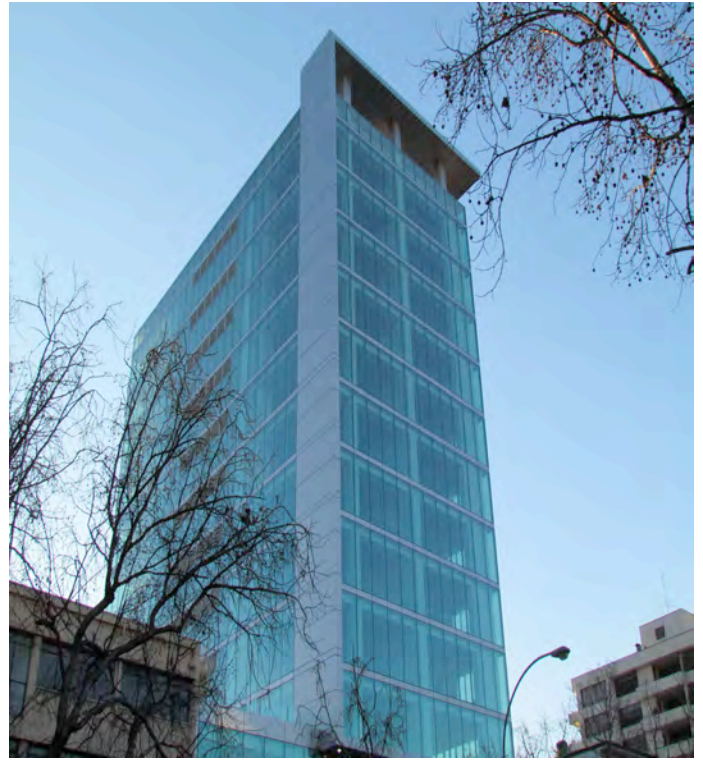


# Structural Glazing



## The successtory of the SGG-familie

**How the usage of a simple tape can make your structural glazing process much easier.**



# The AFTC SGG's: Structural Glazing of future.

As early as the 1970's construction companies started using liquid adhesives for attaching glass and aluminium panels to the supporting frames. During the years many steps forward were made in this process. First the switch was made from 1 component to 2 component silicones. And now we are able to present you the next step in this evolution.

The AFTC SilverTape SGG-family. This product range is a specially designed 2,3mm thick Acrylic Foam Tape (AFT) for these applications. Due to it's visco-elastic characteristics the tape is capable of dealing with all the stresses, which occur in a modern day façade.

AFTC has created a special program which includes a written warranty on the usages of the AFTC SilverTapes in the application.

Before being able to give the warranty our specialized teams will give several extensive trainings on the applications of the tapes in combination with your project. After all of this we will be several times present in the form of an official audit to check if all on site applications will be done correctly.

For more information on our SGG tapes please contact one of our AFTC Sales representatives:

AFTC Europe Sales : +31 43 60 43 797

AFTC USA Sales : +1 610 291 2684

AFTC India Sales : +82 70 4642 0241

*Please visit our website for the contact details of your local AFTC office or official distributor.*



## We are proud to present: The SilverTapes SGG & SGB.

### Structure:

Below information is valid for all AFTC SilverTapes of the the SGG family

Adhesive	: High Performance Acrylic
Adhesive Carrier	: Conformable Closed Cell Acrylic Foam
Description	: Warranty Application, Structural Glazing
Coating	: Coating 40 (liner side), Coating 40 (open side)
Thickness	: 2,30 mm
Tolerance	: $\pm 0,1$ mm
Density	: Gray / Black
Liner	: Red PE Film (Paper liner is optional)

### Tape Characteristics:

#### AFTC SilverTape SGG

Peel Adhesion 350 N/100mm  
(ASTM D3330)

Normal Tensile 500 kPa  
(ASTM 897)

Dynamic Shear 520 kPa  
Overlap (ASTM 1002)

Static Shear 1000 (20C)  
500 (90C)

Solvent Resistance Excellent  
UV Resistance Excellent

Temperature Resistance  
Long term 120 C  
Short term 160 C

#### Available Sizes

Standard Length 33,0 m  
Maximum Length 66,0 m  
Core Diameter 75,0 mm  
Standard Width  $\pm 0.4$  mm  
Tolerance

### Tape Characteristics:

#### AFTC SilverTape SGB

Peel Adhesion 350 N/100mm  
(ASTM D3330)

Normal Tensile 500 kPa  
(ASTM 897)

Dynamic Shear 520 kPa  
Overlap (ASTM 1002)

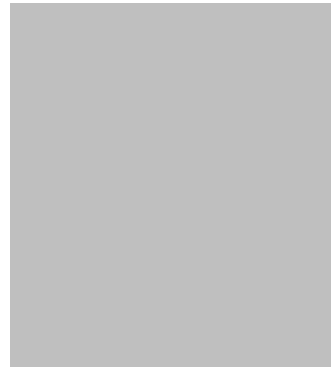
Static Shear 1000 (20C)  
500 (90C)

Solvent Resistance Excellent  
UV Resistance Excellent

Temperature Resistance  
Long term 120 C  
Short term 160 C

#### Available Sizes

Standard Length 33,0 m  
Maximum Length 66,0 m  
Core Diameter 75,0 mm  
Standard Width  $\pm 0.4$  mm  
Tolerance



# The Pasing Arkaden Munich: The longest shopping Center in Germany.

In the beginning of 2011 our customer Christian Pohl in Germany contacted us with a questions if we were able to bond stiffeners on the back of Aluminium panels, which would also be used as attachments to the façade.

As an extra challenge the stiffeners would be bonded before the powder coating process. This meantst that the tape had to withstand a maximum temperature of 240 degrees Celcius and withstand the alcalic Chemicals used to clean the panels before coating.

For this we recommended the use of our AFTC SilverTape 6011, which has been specially designed for these applications. With its high temperatire and chemical resistance this tape did the job perfectly.

To make the production process even quicker and easier Pohl decided to use a specially designed applicator, this device enabled Pohl to install two lanes

of the tape with one movement.

As warranty was a big issue for the German building committee we decided to go for external testing at an independent institute. For this we contacted the Fraunhofer institute.

We supplied several panels, which had been through the complete production process and were so representable for the whole project.

After ageing and testing the tape preformed outstanding and all the panels could be installed without any problems and with our application warranty.





# Exact

## Dutch offices in Delft

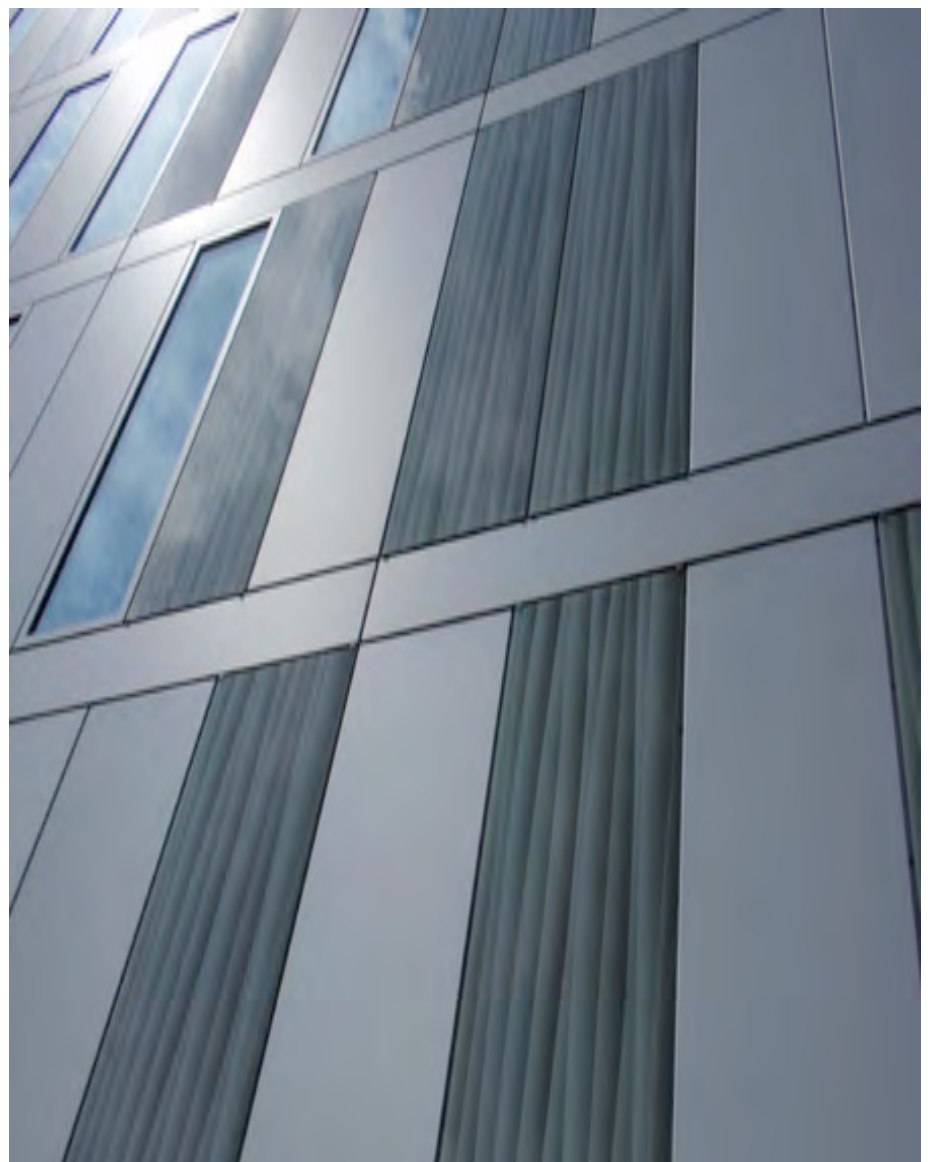
This project was build by AKS Bouw in Grubbenvorst, the Netherlands.

What made this project special is that the whole construction was designed as a bed hook system.

This means that the profiles that are bonded on the back of the colour printed glass panels are hooked into the construction. This means that the complete weight and dynamic loads are 100% transferred onto the tape.

Because of the Dutch building regulations the construction company had to install dead load supports to ensure that these clams would support the weight of the panels.

Because of the time pressure for finishing this project the contractor decide to handover the bonding itself to an official AFTC Bonding Centre. These centres are certified and regularly audited by AFTC members to ensure their quality in bonding.





# All around the world

## From Santiago de Chili to Singapore.



### Edificio Libertad (Santiago de Chili)

Together with our distribution partner in Chili, OEM Ltd. , we were asked to participate in working on one of the highest buildings in Satiago de Chili.

Because of the risks of Earthquakes the consultants and architects decided to work with our AFTC SilverTapes. SGG tapes showed during intensive testing that the characteristics of the products were perfect in dealing with all the extra stresses, which happen during an earthquake.

The complete building (Glass Panels and aluminium panels) were bonded with our SGB tapes in 15mm for the glass panels and 10mm for the aluminium panels.



### CJIB, Leeuwarden (the Netherlands)

Together with the Rollocate our Dutch team started on a special project for the Dutch Institute for collection of Penalties and fines.

This was a special project as these were all windows with a size of 3500 x 2500 mm. If the size of the windows wasn't a big challenge enough we also had to take in consideration the wishes of the architect in doing only two sided bonding instead of the more standard four sided version.

Nevertheless after testing in our lab we were able to give our go ahead for the project with our SGG tape with a width of 30mm. For this the customer used a applicator to ensure a bubble free application.



### The Marriott on Orchard Road (Singapore)

As part of the intensive renovation activities around the Marriott Hotel and Tang Shopping Centre on Orchard Road in Singapore. The construction company also had to install an overhead glass passage for the customers to pass from one building to the other.

The construction was made 100% around the building and is kept together with our AFTC SilverTape SGG.

Our AFTC Singapore team was onsite many times to ensure the safe and proper installation of the tape in combination with the glass panels.





# Freedom Tower, rebuilding the future

New York, United States, Metall Cladding



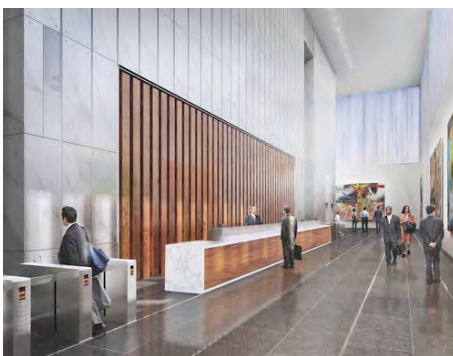
Freedom Tower, New York, Internal Cladding



## Inside the most Famous Building in the world

As always this building brought us some new and interesting challenges in regards of applying our tapes. As this was no conventional Metall Cladding project where a standard prefabricated frame would be bonded to an aluminum panel. Now for this project we had to bond highly sensitive and very thin mirror-like Stainless Steel sheets to a standard Aluminum Panel.

To prevent any visible damage or bonding lines on the front of the panels our customer Christian Pohl (Cologne, Germany) decided to apply the tape on the full surface of the panels. For this we recommended the usage of our AFTC SilverTape 8502. This ultra-thin transparent tape SilverTape has the advantage that it makes the Stainless steel more resilient to damages and on the other side creates a strong and permanent bond which is strong enough to be installed without a deadload support in the project.





*Hermitage, Amsterdam, Bombblast SG*



And this is  
only the  
beginning



*Rockland Hospital, Dèhli, India, SG*



## AFTC Group, Regional Offices

AFTC EMEA  
Weert 78, 6231 SB Meerssen  
Netherlands

+31 43 60 43 797  
[www.aftcgroup.com](http://www.aftcgroup.com)

AFTC USA  
147 Snyder Lane, Springfield, PA  
19064, United States

+1 610 219 2684

AFTC Asia

Please visit our website ([www.aftcgroup.com](http://www.aftcgroup.com)) or contact one of our Regional Offices for the contact details of your local AFTC Office or official Distributor.